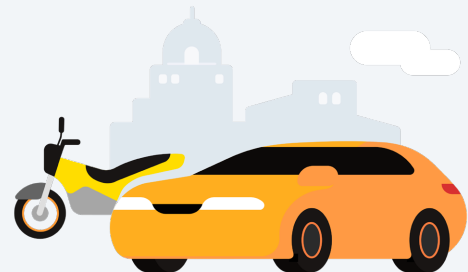




Fri, 25 Jul, 2025

Gisella, thanks for riding with Express



Total

S/ 40.50

Fare Breakdown

| | |
|--|-----------|
| Upfront Fare | S/ 40.30 |
| Duration | 58min |
| Booking Fee | S/ 1.20 |
| Payment Method | |
| Yape  | -S/ 40.50 |

 [Question about Fare](#)

Trip Details

18 km | 58 min



Express



07:30 am

Jaime Bausate y Meza 143



08:28 am

Clinica Oftálmica Mácula D&T